

JLT FORENSICS — POST LOSS CLAIM PREPARATION

JLT SPECIALTY USA | POST LOSS CLAIM PREPARATION

When a claim occurs, a business is often faced with what appears to be an overwhelming situation as they begin to wrestle with many competing priorities - looking after employees, understanding the impact, ensuring safety, mitigating the loss, and recovering the business.

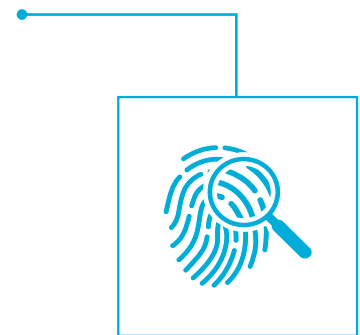
In the aftermath of a major catastrophic event, these tasks become even more challenging while multiple businesses and communities are dependent on the same group of vendors to support recovery.

It is no surprise therefore that capturing and collating information for the purposes of submitting property / business interruption insurance claims often seems a low priority.

But it is a priority, and there are some pressing challenges to overcome in order to successfully quantify, submit, and resolve a claim:

- **It is a complex process:** The claim document communicates the Insured's loss to the Insurer, but the process and formulation of the claim is technical and complex and requires significant resources.
- **Experts are engaged by the Insurer:** In the event of a loss, an Insurer will be quick to appoint a panel of experts to assist them to protect their rights, which may include loss adjusters, loss control professionals, and forensic accounting experts. You need your own expert to advocate for a fair settlement.
- **Cash flow constraints:** Following a loss, most insureds will experience a cash flow crunch, as revenues are reduced and costs increase.

To manage these challenges, JLT Specialty USA has a global team of Forensic specialists that possess Post Loss Claims Preparation experience. JLT's experience includes the ability to prepare extremely complex claims (generally the type of claims that occur after major storms), advocate for the insured, and work to resolve the claim quickly to support financial recover. The result – prompt payments are more easily secured, your recovery is maximized, and stress is minimized while supporting the restoration of normal operations.



FOR MORE INFORMATION
REGARDING JLT FORENSICS,
PLEASE CONTACT:

PHIL REARDON

*Analytics and Consulting
National Practice Leader JLT
Forensics USA*

T + 1 312.282.8599

E Phil.Reardon@jltus.com

CHRIS LUCK

*National Practice Leader
Property Claims Advocacy*

T + 1 817.600.9671

E Chris.Luck@jltus.com

MIKE GIACOBBE, PH.D.

*Global Head of Data, Analytics,
and Consulting*

T + 1 312.637.6127

M +1 312.316.2947

E Mike.Giacobbe@jltus.com

ABOUT JLT FORENSICS

JLT's Forensics team of 30+ accounting and valuations professionals provides the technical acumen to assist our client's to better understand their Business Interruption exposures, evaluate supply chain risks, and provide effective claim preparation services to companies in time of need. Our team has global reach and capability operating out of the UK, Australia, Asia, and the United States and can go to any geography on location to support evaluation and response needs.

Our team is comprised of forensic accountants and supply chain experts with an average of 15+ years of experience, which positions us to focus on Pre and Post Loss approaches grounded in core revenues, gross profits, and earnings streams. We couple this core skill set with deep value chain knowledge that allows JLT Forensics to incorporate key vulnerabilities, operational dependencies, and inter-group dependencies into our assessment and quantification efforts.

ABOUT JLT

JLT Specialty USA is the U.S. platform of the leading specialty business advisory firm, Jardine Lloyd Thompson Group. Our experts have deep industry and product experience serving leading U.S. and global firms. Our key to client success is our freedom to be creative, collaborative, and analytical while challenging conventions, redefining problems, creating new insights, and exploring new options to deliver solutions for each client's unique business and risks.

JLT is one of the world's leading providers of insurance, reinsurance, and employee benefits related advice, brokerage and associated services. We are specialists. Our deep expertise and entrepreneurial culture give us the insights, creative freedom and tenacity to go beyond the routine and deliver better results for our clients. At JLT, clients come first. JLT owns offices in 40 territories and has more than 10,000 colleagues. Supported by the JLT International Network, we service clients in over 135 countries.